

New User Interface

Highlight Feature

- > Personalised Touch Screen with changeable button design and size
- > Routine tasks can be set on the home screen.
- > Smartphone-like User Interface (UI) operability and enhanced high reactivity
- > Preview screen can be operated through pinch-in/-out.
- > Efficient simple UI collecting basic features



Your challenge

Document processing and storage would remain as major concerns for various stakeholders in today's fast moving and dynamic environment. Even with the investment of high cost for information infrastructure, there is still more room for improvement at both front and back end offices. Improvements in daily workflow efficiency lead to a significant contribution!

Our solution

Toshiba's easy-to-use new user interface makes printing, scanning, copying and faxing easier. It allows you to create personalised functions according to your business needs and carry out your tasks more quickly and efficiently at the control panel of the Toshiba e-BRIDGE Next MFPs.

NEW USER INTERFACE

Your benefits

The new user interface (UI) on the control panel allows you to select a desired application and smoothly navigate to the function of your choice.

By customising the screen background, design and size of the icons and by adjusting home screen settings according to your workflows, you can create an individual control panel.

The "Simple UI" to collect basic settings and "Advanced UI" to enable advanced settings are used depending on the job, to improve both operational quality and efficiency.

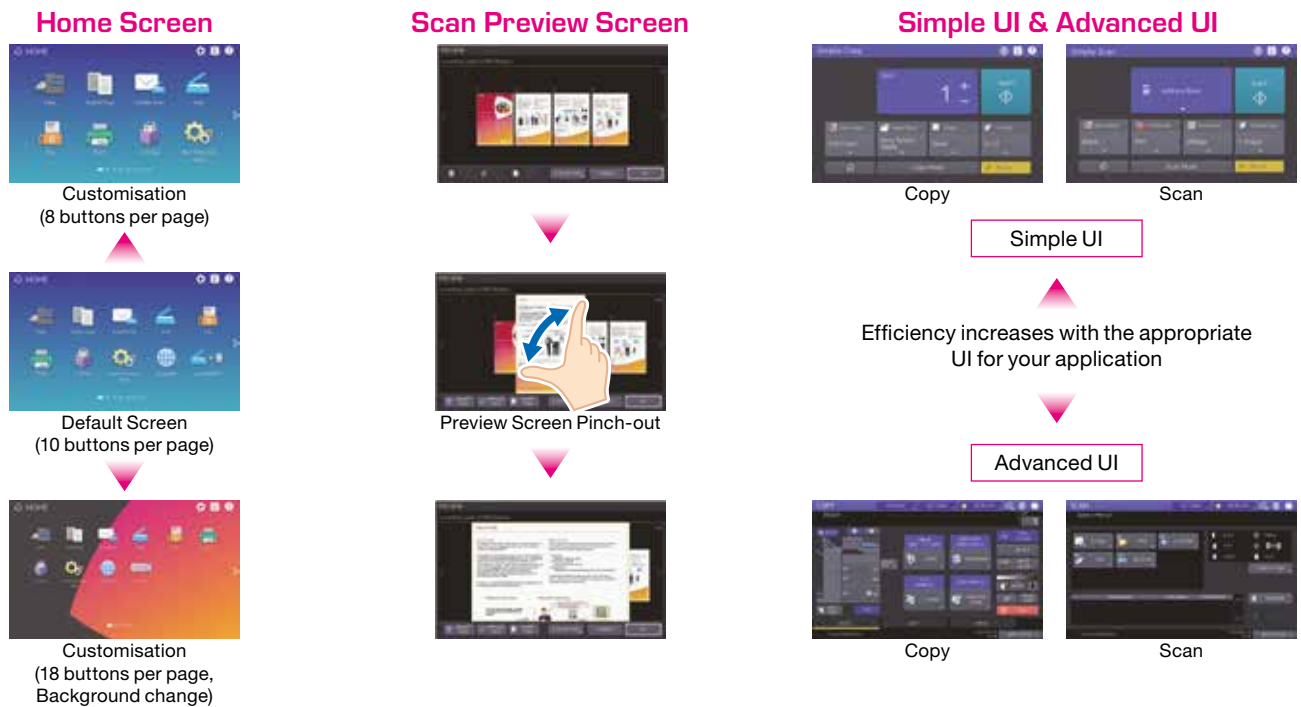
The new UI also allows you to save a lot of time, provides you better system connectivity and improves the response speed. Thus, the MFP will be your integral IT device.

Where to use

Any company that captures, processes and stores information will realise the new UI can improve the operational efficiency.

- > General Office
 - Increased productivity through quick task completion
- > Logistic
 - Fast information retrieval
- > Manufacturing
 - Customised layout and icons for different business units
- > Education/Retail
 - Ease information capture
 - "Simple UI" encouraging students and customers to use the new UI without hesitation

The new Toshiba UI helps you retain the competitive edge in business by improving efficiency and effectiveness. Thus, you can now take a lead in business.



For more information and a complete list of MFPs with this feature please contact us:

Toshiba Tec Germany Imaging Systems GmbH

Carl-Schurz-Str. 7
41460 Neuss
Germany

Telephone

+49 2131-1245-0

Website

www.toshibatec.eu