



e-FileWatcher Data Sheet

- e-FileWatcher for modeling flexible workflows
- Central monitoring of directories, email mailboxes and print data streams, as well as DocuWare, and connectivity to e-ScanFlow
- Adaptable configuration of rule-based processes
- Easy creation of workflows via a configuration interface



Simple and Fast Modeling of Workflows

Flexible workflow adaption

Would you like to apply individual additional information, such as a time stamp or watermark, to a scanned document?

Do you want the document to be automatically stored in a defined network folder?

Or should attachments from an email be printed immediately after receipt?

The possibilities for modeling processes are numerous and can be linked.

Simple administration

A configurator is available for the creation of workflows and their links. This gives you a quick overview of your defined processes at any time.

System Requirements

Installation requirements

- .NET Framework 4.8

Minimum requirements

- CPU: Quad Core 2.0 GHz¹⁾
- Memory: 8 GB RAM
- Hard disk: 40 GB²⁾

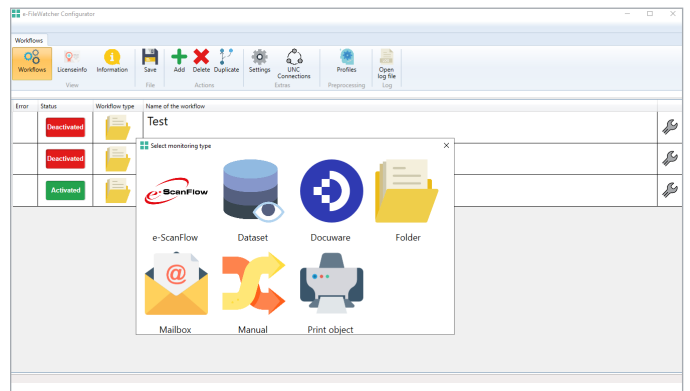
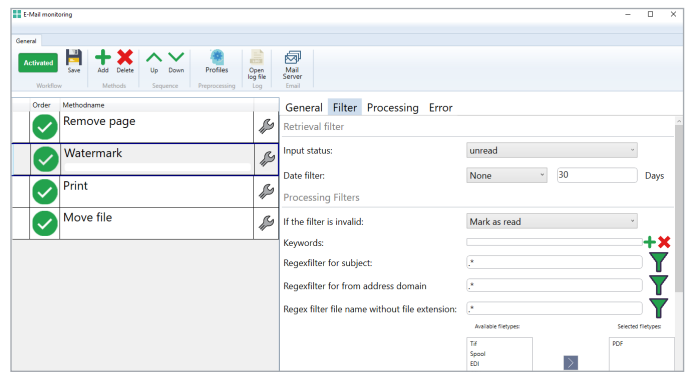
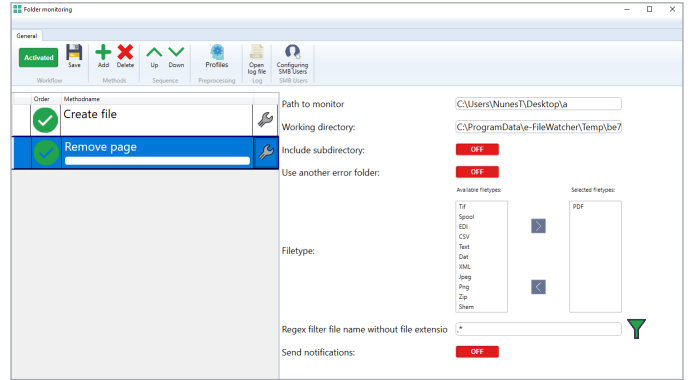
Recommended requirements

- CPU: Quad Core 2.0 GHz
- Memory: 16 GB RAM
- Hard disk space: 80 GB

Supported operating systems

- Windows Server 2016 (64 bit)
- Windows Server 2019 (64 bit)
- Windows 10 (64 bit)
- Windows 11 (64 bit)

1) Depending on the amount of workflows, the required CPU performance may vary.
 2) Depending on the amount of documents stored, the required disk space will vary.



Scope of Services

e-FileWatcher application has a modular structure and can therefore be adapted to changing requirements and conditions at any time. Depending on your demands, you can choose between three e-FileWatcher variants, whereby e-FileWatcher Basic is already equipped with important functions including OCR recognition. Furthermore, e-FileWatcher is delivered as a so-called enterprise license. Functional range of the e-FileWatcher BASIC, PLATINUM and BLACK EDITION versions:

	e-FileWatcher BASIC	e-FileWatcher PLATINUM	e-FileWatcher BLACK EDITION
Unlimited number of workflows	✓	✓	✓
Enterprise license	✓	✓	✓
Manufacturer independence	✓	✓	✓
Individually customizable	✓	✓	✓
Directory monitoring	✓	✓	✓
Start manual workflow	✓	✓	✓
Zoom in/out documents (zoom)	X	✓	✓
Compress	✓	✓	✓
Email mailbox monitoring	✓	✓	✓
Directory monitoring/data record processing	✓	✓	✓
Data stream monitoring	✓	✓	✓
Stamp and watermark	✓	✓	✓
Move, delete, and copy documents	✓	✓	✓
Print documents	✓	✓	✓
Script execution	✓	✓	✓
Blank page detection	✓	✓	✓
Barcode separation and recognition	✓	✓	✓
Sending of emails	✓	✓	✓
Conditions	✓	✓	✓
Split documents	✓	✓	✓
Upload files to FTP server	✓	✓	✓
Summarize PDF	✓	✓	✓
Upload documents via HTTP	✓	✓	✓
Create log file	✓	✓	✓
OCR	250 pages/month	incl.	incl.
Zonal OCR	X	✓	✓
Database access/enquiries	X	✓	✓
PDF to Word	X	✓	✓
PDF to Excel	X	✓	✓
Export parameters to XML	X	✓	✓
Import parameters via XML / LDAP	X	✓	✓
Optical mark recognition	X	✓	✓
Convert X-Invoice to PDF	X	✓	✓
Change page format	X	✓	✓
DocuWare connector	X	X	✓
Upload to SharePoint	X	✓	✓
Image processing (applying image algorithms to the document)	X	✓	✓
Zooming in/out of documents (zoom)	X	✓	✓

About Toshiba Tec

Toshiba Tec Germany Imaging Systems GmbH is part of the globally operating Toshiba Tec Corporation, active in various high-tech industrial sectors.

Toshiba Tec Corporation is a leading provider of information technology, operating across multiple industries - ranging from retail, education and business services to hospitality and manufacturing. With headquarters in Japan and over 70 subsidiaries worldwide, Toshiba Tec Corporation helps organisations transform the way they create, record, share, manage and display information.

For more information please contact us:

Toshiba Tec Germany Imaging Systems GmbH

Carl-Schurz-Str. 7
41460 Neuss
Germany

Telephone

+49 2131-1245-0

Fax

+49 2131-1245-402

Website

www.toshibatec.eu



Together Information is Toshiba's vision for how people and organisations create, record, share, manage and display ideas and data.

It is based on our belief that the most successful organisations are those that communicate information in the most efficient way.

We make that possible through an integrated portfolio of industry-specific solutions, all of which reflect Toshiba's commitment to the future of the planet.

