



Product brochure

- > Improve your efficiency and productivity by printing where and when you want.
- > Control and reduce your printing costs by enforcing print policies and quotas and reduce your printing waste.
- > Easy setup — easy administration: manage your printing environment from a central web-based application.



WHERE, WHAT AND WHEN YOU WANT

You decide

The virtual print queue concept of Toshiba's e-FOLLOW will hold your print jobs until you decide where you want to print. This gives you full flexibility: One printer is busy? You prefer to print on the system closest to a meeting room? No problem. Your print job will follow you - wherever you may go.

User authentication at the system itself is easy: Either swipe your ID card through a card reader to authenticate yourself or type in your password/pin at the MPF panel.

Once you have chosen a printer and have selected your print job, you still have the possibility to change parameters such as simplex/duplex printing or printing colour print jobs in black & white.

Take your time

With e-FOLLOW you don't have to worry about your print job getting lost, misplaced or accidentally thrown away. Your documents will only be printed when you are ready to collect them. This also has other advantages: you don't have to rush to the printer. As you are the one who releases the print job at the system, you can be sure your confidential documents will not be read by others.

Do you have documents, which you need to print regularly? Just save them on the print server once and they are ready for you to reprint any time — again and again.

What you want is what you get

You just hit the print button and then notice the document needs to be changed? No problem, simply apply the changes and send for print again. When you then walk up to the printer of your choice, both documents will be waiting for you just select the right one for printing and delete the other one.

If you are not sure about which document to delete, simply use the preview function of the system. It allows you to look at a document on the panel in front of you before deciding whether to delete or print it.

Thanks to this, overflowing output trays due to uncollected print jobs are now something of the past. You don't have to look through a pile of paper to find your documents, plus, of course, you save paper.





TECHNICAL DETAILS

Toshiba e-FOLLOW is available in two versions:

e-Follow Essentials is your entrance to the world of output management. Equipped with the essential functions it enables you to provide secure pull-printing functionality to your users and manage and control your print environment by setting quotas and analysing the usage thanks to the built-in, pre-defined report engine.
For technical details please refer to the datasheet for e-FOLLOW Essentials.

e-Follow Professional enhances the functionality of e-FOLLOW Essentials by adding cost control features (e.g. user balance, project accounting and printing rules), team print, scheduled reporting and much more. It is ready to be used in larger enterprises as it allows you to run multiple server instances and supports multi-domain environments.
The technical details in this document refer to the e-FOLLOW Professional version.

Easy Administration

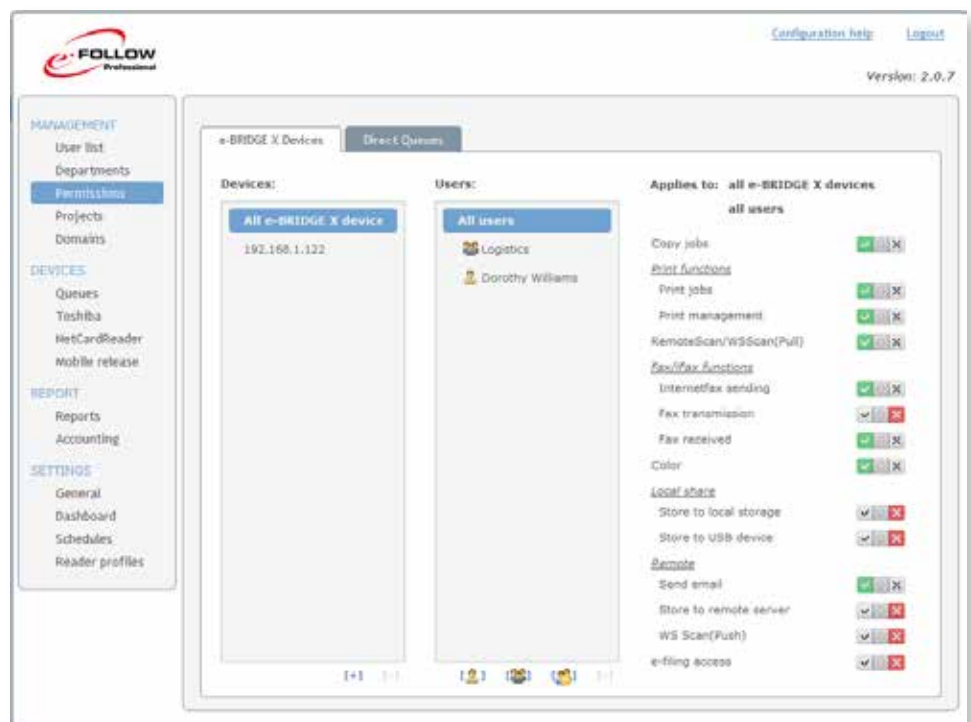
The light-weight and self-explaining web interface makes it a pleasure to administrate and manage your printing environment:

- > Define quotas for users, departments and devices.
- > Generate reports to analyse the device usage and provide the data to allocate the true costs of printing and optimise printer usage.
- > Manage user access rights, define printing policies to reduce printing costs and waste, e.g. by enforcing duplex printing.

System Requirements

Processor	Required: Dual Core 2 GHz Recommended: Quad Core 2.4 GHz
RAM	Required: 2 GB Recommended: 8 GB (or more)
Free Disk Space	Required: 100 GB Recommended: 500 GB (or more) Required disc space depends on average retention time, size and number of spooled files.
Web Browser	Any web browser supporting Java Script
Supported Operating Systems	Windows Server 2012 R2/Server 2012/Server 2008 R2 (64 bit) Requires Microsoft .NET runtime 3.5 SP1 or newer

For a complete list of compatible systems, please contact your local Toshiba partner.





About Toshiba Tec

Toshiba Tec Germany Imaging Systems GmbH is part of the globally operating Toshiba Tec Corporation, active in various high-tech industrial sectors.

Toshiba Tec Corporation is a leading provider of information technology, operating across multiple industries - ranging from retail, education and business services to hospitality and manufacturing. With headquarters in Japan and over 80 subsidiaries worldwide, Toshiba Tec Corporation helps organisations transform the way they create, record, share, manage and display information.

For more information please contact us:

Toshiba Tec Germany Imaging Systems GmbH

Carl-Schurz-Str. 7
41460 Neuss
Germany

Telephone

+49 2131-1245-0

Fax

+49 2131-1245-402

Website

www.toshiba-europe.com/tec



Together Information is Toshiba's vision for how people and organisations create, record, share, manage and display ideas and data.

It is based on our belief that the most successful organisations are those that communicate information in the most efficient way .

We make that possible through an integrated portfolio of industry-specific solutions, all of which reflect Toshiba's commitment to the future of the planet.

For more information please visit www.togetherinformation.com